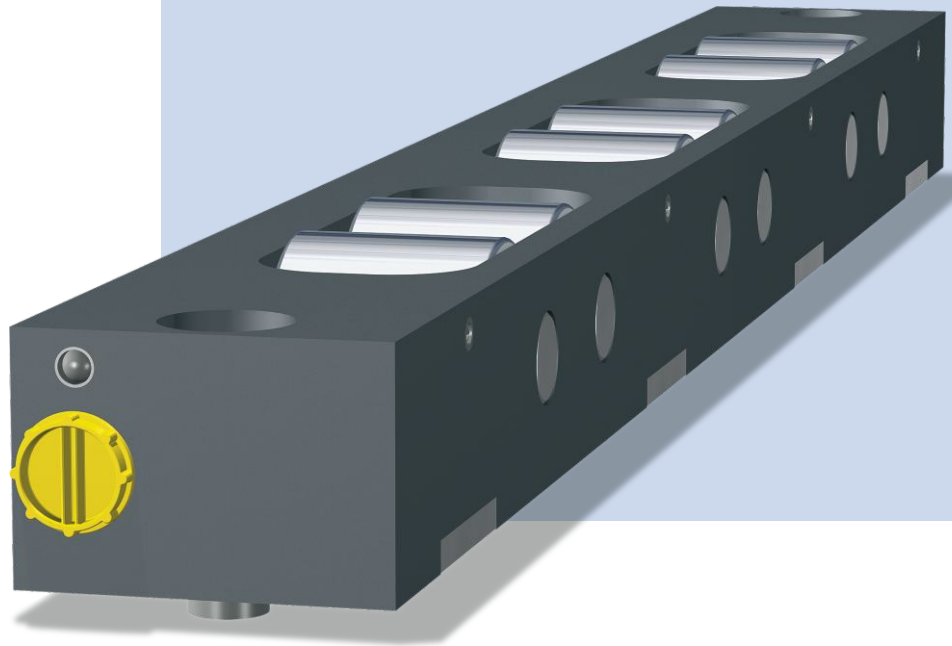


LGGH

Heavy-Duty Hydraulic Roller Bar

for dies > 10 t



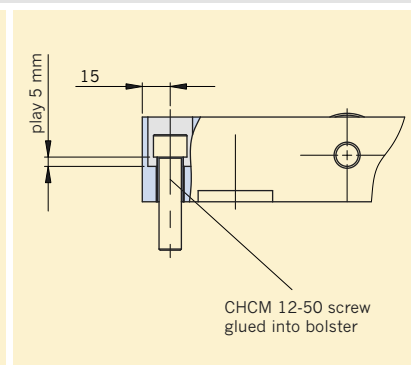
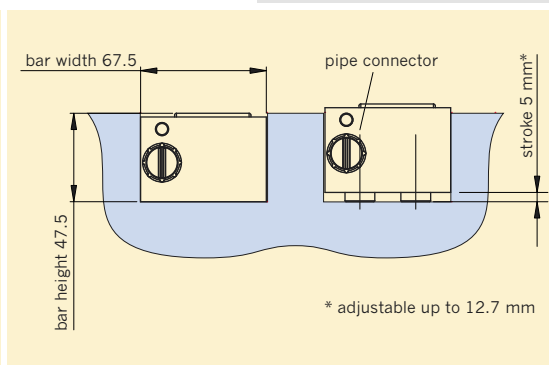
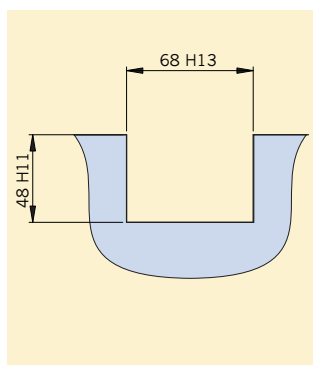
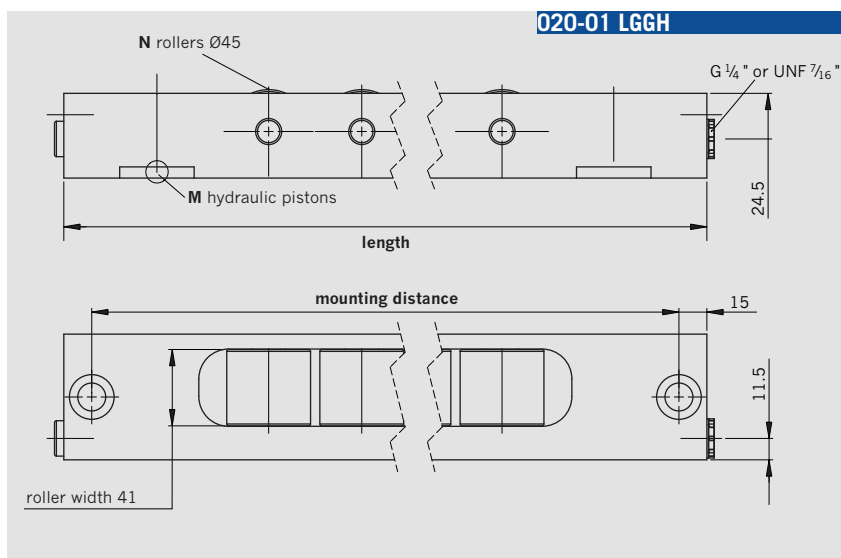
Features

- ▶ very low rolling friction
- ▶ hydraulic lifting
- ▶ In rolling bolster systems, the bar can be mounted with rollers down to move the bolster on the floor.
- ▶ recommended for dies above 10 tons
- ▶ operating temperature up to 70 °C

LGGH

Heavy-Duty Hydraulic Roller Bar

for dies > 10 t



LGGH models: specifications and dimensions

	LGGH 600	LGGH 950	LGG 1300	LGGH 1650
length [mm]	610	950	1290	1640
carrying load [kN]	144	216	288	360
dynamic load [kN]	72	120	168	216
max op. pressure [bar]	400	400	400	400
hydraulic pistons (M)	8	12	16	20
max oil volume [cm ³]	18	27	36	45
max flow rate [l/min]	2.88	4.32	5.7	7.2
rollers (N)	6	10	14	18
mounting distance [mm]	580	920	1260	1610
weight [kg]	11.5	18	24	30.5

For special slot sizes please contact us directly.

Unless specified otherwise, bars come with the standard G 1/4" hydraulic ports. or UNF 7/16" on request.

Ordering reference

LGGH length: standard length or special length in mm
S (for special lengths, attach drawing) – hydraulics port if non-standard

Examples: LGGH 950 (standard length) / LGGH 1000 S (special length)

For the calculation of dynamic load per single roller, see data sheet 010-00.

SERAPID S.A.S. France
 info-fr@serapid.com · www.serapid.fr

SERAPID Ltd UK
 info-uk@serapid.com · www.serapid.com